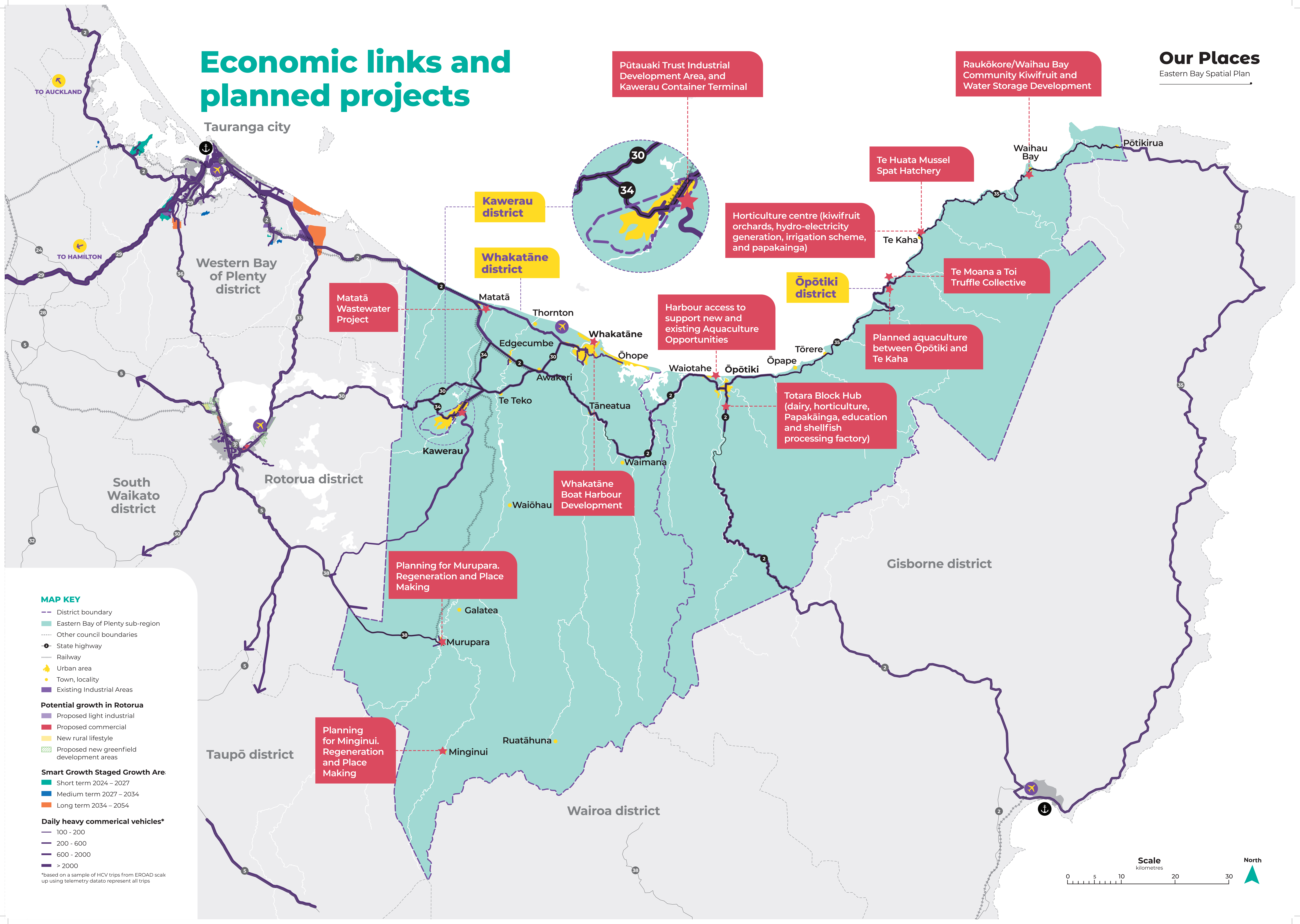


Economic links and planned projects



Pūtauaki Trust Industrial Development Area, and Kawerau Container Terminal

Raukōkore/Waihou Bay Community Kiwifruit and Water Storage Development

Te Huata Mussel Spat Hatchery

Horticulture centre (kiwifruit orchards, hydro-electricity generation, irrigation scheme, and papakainga)

Te Moana a Toi Truffle Collective

Ōpōtiki district

Harbour access to support new and existing Aquaculture Opportunities

Planned aquaculture between Ōpōtiki and Te Kaha

Totara Block Hub (dairy, horticulture, Papakāinga, education and shellfish processing factory)

Whakatāne Boat Harbour Development

Planning for Murupara. Regeneration and Place Making

Planning for Minginui. Regeneration and Place Making

- MAP KEY**
- District boundary
 - Eastern Bay of Plenty sub-region
 - Other council boundaries
 - State highway
 - Railway
 - Urban area
 - Town, locality
 - Existing Industrial Areas
- Potential growth in Rotorua**
- Proposed light industrial
 - Proposed commercial
 - New rural lifestyle
 - Proposed new greenfield development areas
- Smart Growth Staged Growth Are**
- Short term 2024 – 2027
 - Medium term 2027 – 2034
 - Long term 2034 – 2054
- Daily heavy commercial vehicles***
- 100 - 200
 - 200 - 600
 - 600 - 2000
 - > 2000
- *based on a sample of HCV trips from EROAD scale up using telemetry data to represent all trips

